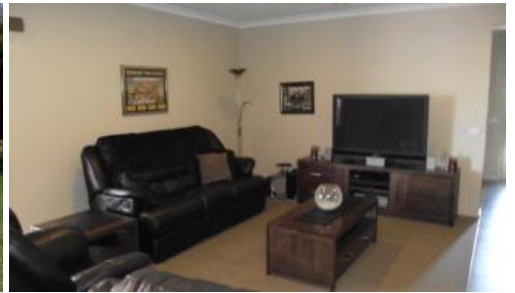


Sold



6 Settlers Drive, Kialla



3 Bedroom + Study Brick Veneer On Large Allotment!

Situated in a tightly held area close to Riverside Plaza sits this three bedroom + study brick veneer on a good size allotment of 759m2 approx. Consisting of main bedroom with full ensuite, separate lounge, large open plan kitchen-dining living area with quality appliances. Evaporative cooling- ducted heating ?8-6?ceilings. Step outside to the undercover entertaining area with hot tub (spa). 8 solar panels, solar hot water, automatic sprinkler system and double lockup garage with remote complete this magnificent package.

The above information provided has been furnished to us by the vendor/s. We have not verified whether or not that information is accurate and do not have any belief in one way or the other in its accuracy. We do not accept any responsibility to any person for its accuracy and do no more than pass it on. All interested parties should make and rely upon their own inquiries in order to determine whether or not this information is in fact accurate.

🏠 3 🚗 2 🛠 2

Price SOLD for \$327,500
Property Type Residential
Property ID 126

Agent Details

Rod Seach - 0488 445 919

Office Details

Shepparton
187 Corio Street Shepparton VIC
3630 Australia
03 5831 6633

