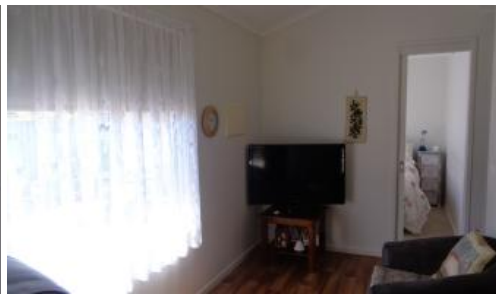


Sold



104 Melaleuca Drive, Parklands, Kialla



Neat as a pin

The heading describes this immaculately presented unit. Consisting of an open plan kitchen/dining/lounge area with gas stove and split system heating and cooling. 2 bedrooms and central bathroom, well-constructed carport and garden shed. The front deck completes this great package. If you are over 50 and looking for a low maintenance unit in a friendly village be quick this wont last.

The above information provided has been furnished to us by the vendor/s. We have not verified whether or not that information is accurate and do not have any belief in one way or the other in its accuracy. We do not accept any responsibility to any person for its accuracy and do no more than pass it on. All interested parties should make and rely upon their own inquiries in order to determine whether or not this information is in fact accurate.

🏠 2 🚗 1 🛏 1

Price SOLD for \$78,000
Property Type Residential
Property ID 779

Agent Details

Office Details

Shepparton
187 Corio Street Shepparton VIC
3630 Australia
03 5831 6633

